

# CAN YOU HELP PANDORA UNCOVER THE MYSTERIES OF PUZZLEVALE, IN THIS EXTRAORDINARY COMIC BOOK PUZZLE ADVENTURE?



This town is **full** of secrets! Can **you** help me discover them all?



Ah, curious reader... maybe you **can** help Pandora! If you can solve cunning **codes, puzzles** and **riddles** like **this** one...



Choose the right **letters**, to unlock this door. Find the **password** in **time**, 2 o'clock, then **more**: 1, 12, 10, 11, 3, 9, 8, 4...

**COMPLETE THIS PHRASE:** TIME FOR \_\_\_\_\_

Check your answer or get a hint on **page 223!**



We're the creators of Pandora in Puzzlevale! Come draw with us in...

**THE PHOENIX COMIC CLUB!**



66013



PANDORA IN PUZZLEVALE THE SECRET TOWN



PAUL DUFFIELD, POQU, SIOBHAN MCKENNA



# PANDORA IN PUZZLEVALE THE SECRET TOWN

PAUL DUFFIELD - POQU - SIOBHAN MCKENNA



**OVER 100**  
MYSTERIES, MAZES,  
RIDDLES, CODES,  
HIDDEN OBJECTS  
AND MORE!



**SOLVE THE PUZZLES - UNCOVER THE STORY!**

# DANDORA

IN PUZZLEVALE

THE SECRET TOWN



THE PHOENIX  
COMIC BOOKS

An imprint of  
FICKLING  
d b  
David Fickling Books

THESE COMICS FIRST APPEARED IN  
**THE PHOENIX**  
HOME OF

# THE PHOENIX COMIC CLUB



You can learn the art of drawing  
and puzzles with us, the creators of  
Puzzlevale! Turn to page 182 of this book,  
or head to **The Phoenix Comic Club** online  
to discover your how-to-draw hub!



*Pandora in Puzzlevale: The Secret Town*,  
is a **PHOENIX COMIC BOOK**,  
Book 1 in the *Pandora in Puzzlevale* series.

First published in Great Britain in 2025 by The Phoenix Comic Books,  
an imprint of David Fickling Books, 31 Beaumont Street, Oxford, OX1 2NP  
[www.davidficklingbooks.com](http://www.davidficklingbooks.com)

Text and illustrations © The Phoenix Comic, 2025

Created and written by Paul Duffield  
Character illustrations and additional writing by Siobhan McKenna  
Background illustrations and map pieces by Poqu  
With additional illustrations and cover by Siobhan McKenna and Paul Duffield

978-1-78845-349-3  
1 3 5 7 9 10 8 6 4 2

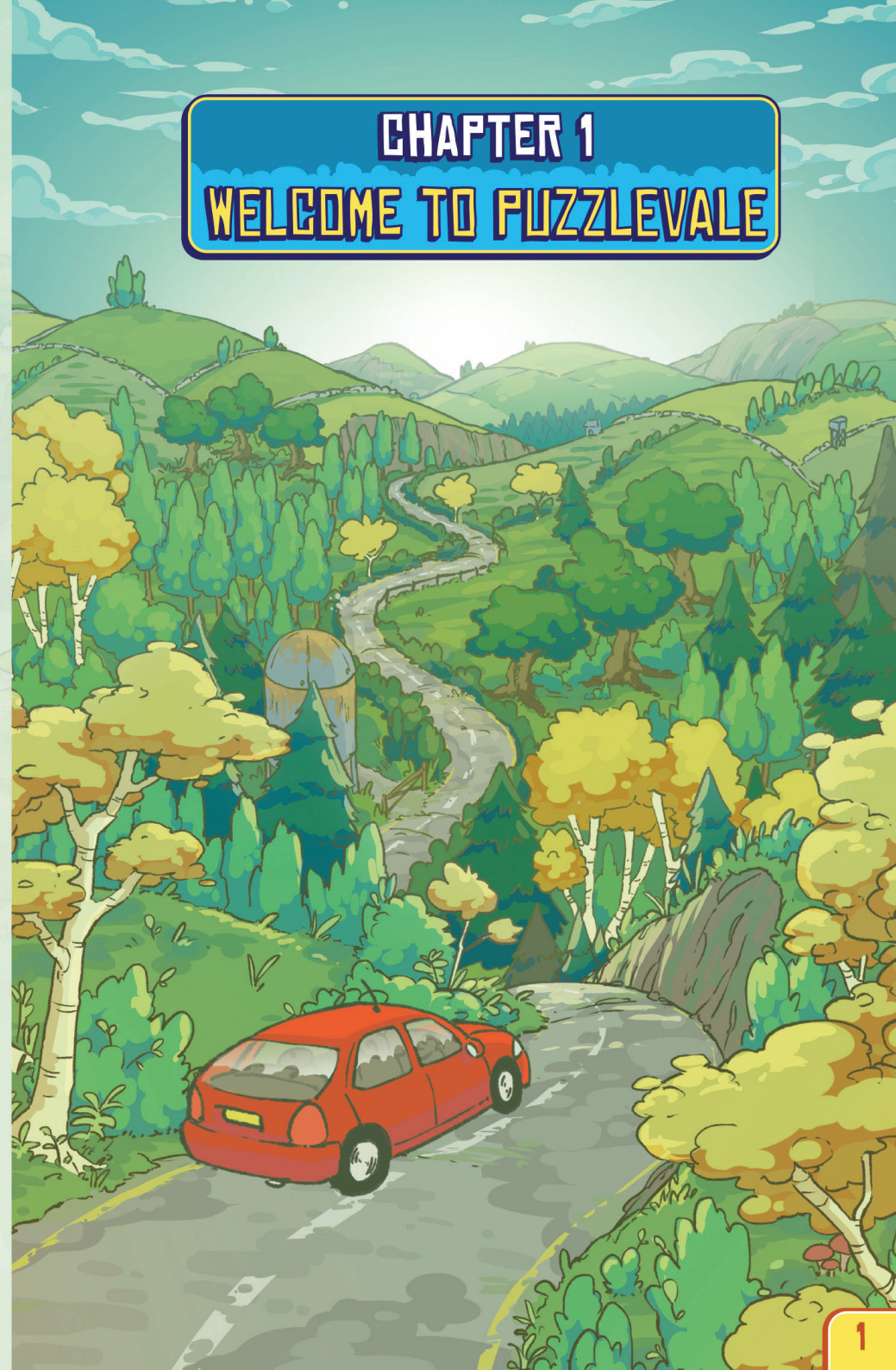
The right of Paul Duffield, Poqu and Siobhan McKenna to be identified as the authors and illustrators of this work has been asserted in accordance with the Copyright, Designs and Patents Act 1988. All rights reserved. No part of this publication may be reproduced, stored in a retrieval system, or transmitted in any form or by any means, electronic, mechanical, photocopying, recording or otherwise, without the prior permission of the publishers. Papers used by David Fickling Books are from well-managed forests and other responsible sources.



DAVID FICKLING BOOKS Reg. No. 8340307  
A CIP catalogue record for this book is available from the British Library.

Printed in China by Toppan Leefung.

## CHAPTER 1 WELCOME TO PUZZLEVALE





Are you okay back there, Pandora? You haven't asked "Are we nearly there yet?" all journey...

You were so excited about visiting Puzzlevale when we left! A holiday in a **SECRET TOWN!**



Pandora...?



Pandooooora...? Hey! Earth to Pandora!



I'm "occupying myself", like you told me to!



I'm busy being a **DETECTIVE!**



That's nice, Pandora, but—

Umm... can you watch the road, honey? I think we just missed a sign.



**DRAT!** This road isn't even on the SatNav any more! Did you see what it said?

It was covered in bushes...

We're going to have to find a place to stop and ask someone.



Pandora, can you get your head out of that bird comic?

(The road...)



It's **CALLED** Detective Crow!

He's a master detective... who is a crow. I'm helping him solve mysteries so I can be just like him.

There's a mystery on every page, and he needs my help to solve them...



I've worked out the first three numbers so far...



That's very nice, but we need to look for a petrol station or something. Have you seen any signs for services?

There's been nothing for miles. Not a building in sight. It's totally deserted out here.



**DOUBLE DRAT!** Maybe you could solve the mystery of where on Earth we are, Pandora?

You can swear, Mum. I've heard you swear before.

Hah! When did you start growing up so fast? We need to be more careful round you...



Wow, look at those cliffs! The road goes right between them...

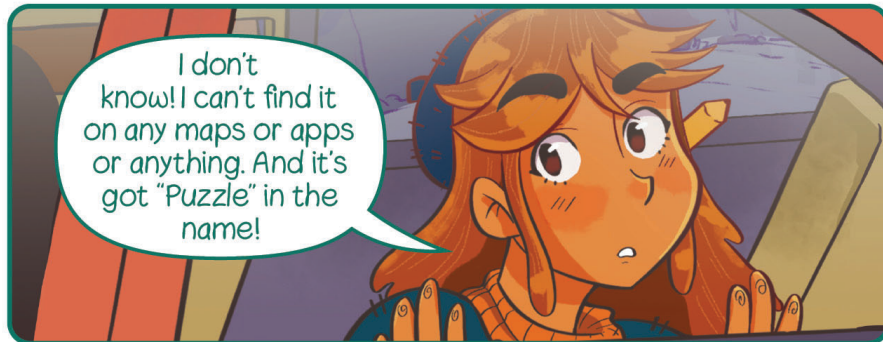


Keep your eye out for a petrol station!

You can count on a **genius** detective, like me.



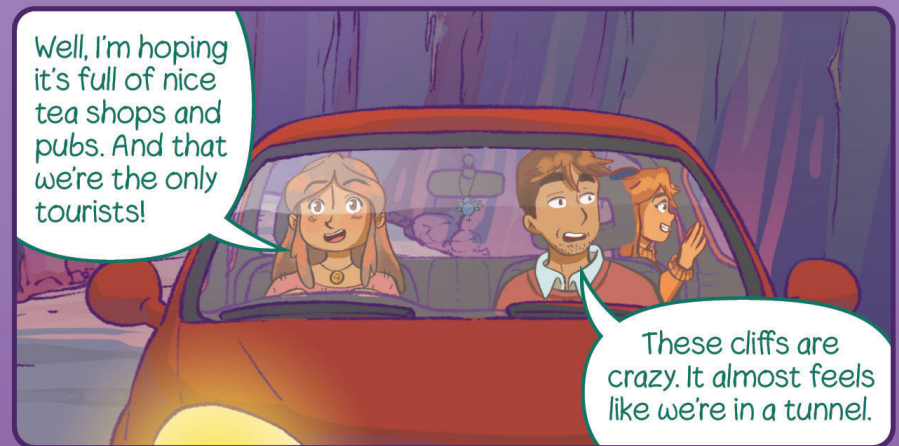
What's up with this place, anyway? Why aren't any of these roads on the SatNav?



I don't know! I can't find it on any maps or apps or anything. And it's got "Puzzle" in the name!



That's why it's a **SECRET** town. I bet it's full of **mysteries!**



Well, I'm hoping it's full of nice tea shops and pubs. And that we're the only tourists!

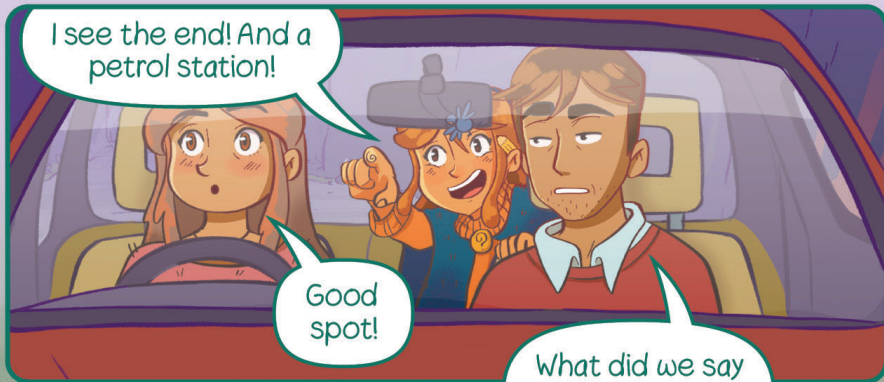
These cliffs are crazy. It almost feels like we're in a tunnel.



How long does it go on for?



It feels like it's been ages already...



I see the end! And a petrol station!

Good spot!

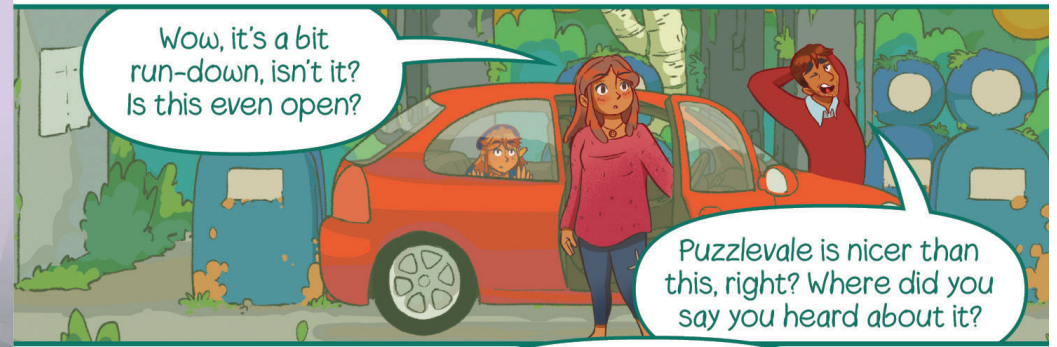
What did we say about leaning into the front?

Don't do it, I knooooow.



Here we are!

Please stay in the car, Pandora. This will only take a minute.



Wow, it's a bit run-down, isn't it? Is this even open?

Puzzlevale is nicer than this, right? Where did you say you heard about it?

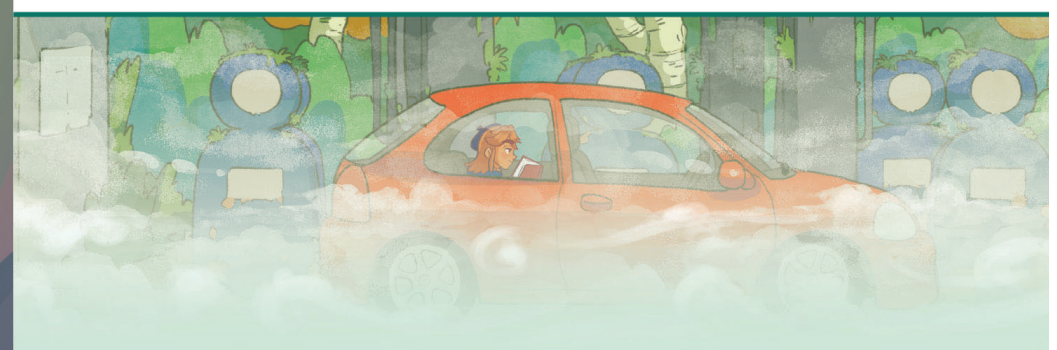


Old travel mag. It's going to be perfect for Pandora, it's got a ruined castle.

I believe you, it's just weird that none of this is on the SatNav. You sure that magazine had the right postcode?



Someone here will know...



# MYSTERY ONE

## MISSING IN THE MIST

SOLVE PUZZLES WITH PANDORA

### HOW TO PLAY

This story is experienced by solving MYSTERIES, and this is the start of MYSTERY ONE. Playing MYSTERY ONE will teach you the rules.

Whenever you see this sign:  it means **READ ME!** Important instructions here, so read that text to **avoid spoilers!**

### THE MOST IMPORTANT RULE!

From now on, **don't** read any new pages unless you see one of these things:


**1** A **READ ME** box that says you can. It will tell you which **PAGE(S)** you can read, and you'll see **this symbol**:



**2** This **symbol** next to a page number: It means you can **READ THE NEXT PAGE** after finishing the current one.



Take your time, and remember, you can turn back to a page you've already read at any time.

Each **MYSTERY** includes a **MAP PIECE** full of clues! This is **MAP PIECE A** . You'll need to **come back to this page later**. For now, read **PAGE 12** to continue!





This mist is **weird!** I still have **puzzles to solve** in my Detective Crow comic, though!

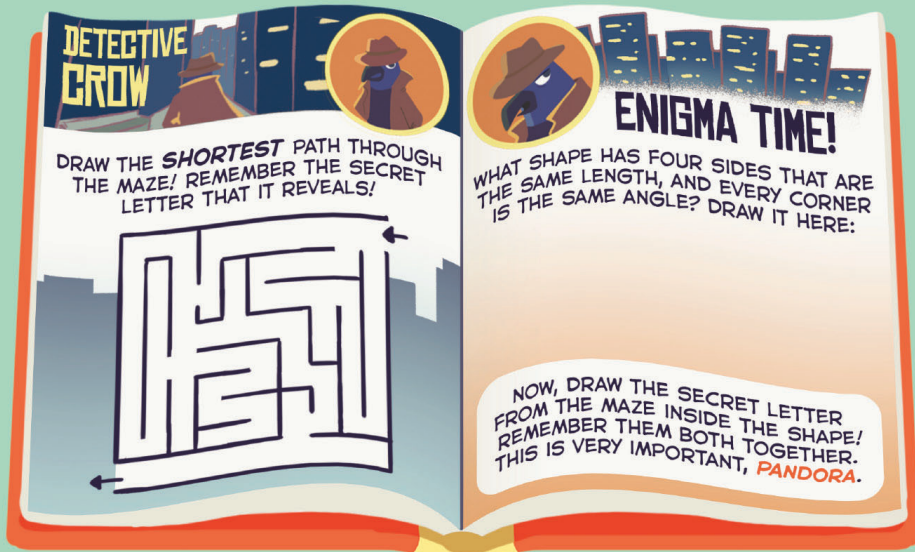


I'll use my notepad! A detective should never be without a **pad** and **pencil!**

**You can use a notepad to write ideas and answers, just like Pandora!**

# PUZZLE 1 SOLVE PANDORA'S DETECTIVE CROW COMIC

Each **MYSTERY** contains up to four **PUZZLES**. This is the **first PUZZLE** of **MYSTERY ONE!**



**DETECTIVE CROW**  
DRAW THE **SHORTEST** PATH THROUGH THE MAZE! REMEMBER THE SECRET LETTER THAT IT REVEALS!

**ENIGMA TIME!**  
WHAT SHAPE HAS FOUR SIDES THAT ARE THE SAME LENGTH, AND EVERY CORNER IS THE SAME ANGLE? DRAW IT HERE:

NOW, DRAW THE SECRET LETTER FROM THE MAZE INSIDE THE SHAPE! REMEMBER THEM BOTH TOGETHER. THIS IS VERY IMPORTANT, **PANDORA.**

**If you're stuck, you can find a hint on PAGE 221.** Flick there **from the back** of the book to avoid spoilers!  
Put a **bookmark here**, and a **bookmark on the hint page** so you can save your progress and return quickly!  
When you think you **know the answer**, check it on **PAGE 221**, then read the **NEXT PAGE** to continue!



**Well done for solving PUZZLE 1! Continue here...**

**What?!** How did **my name** show up in my Detective Crow comic?! This is **so weird!**



And Mum and Dad are taking **way** too long! This is all freaking me out. I'm going to see if they're **in the shop...**

# PUZZLE 2 CHECK THE SHOP DOOR

To solve this **PUZZLE**, you'll need to look back at **MAP PIECE A** on **PAGES 10+11!**



The door's **locked...** and there's a **piece of paper** by it. **Is this a puzzle?!** I thought that sort of thing only happened in Detective Crow! I should solve it, maybe it's a **clue.**



**IF YOU CARE ABOUT THIS SHOP AT ALL, YOU'LL FIND THE LETTERS ON PLACES NEARBY**

**Find a hint and check your answer on PAGE 221!** Then, **read the NEXT PAGE** to continue...

Good job on PUZZLE 2! Move your bookmark to THIS PUZZLE to save your progress!



How could a clue for the puzzle on this shop be in my Detective Crow comic, as well as my name?!



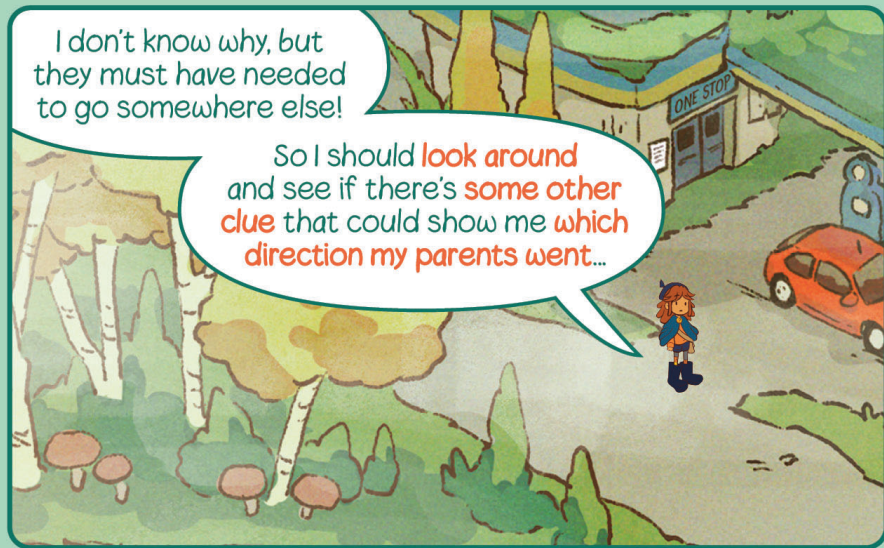
Got to think! Detective Crow has trained me for this... Okay... the shop is closed, so my parents wouldn't have gone in.

# PUZZLE

## 3

### LOOK FOR A CLUE TO WHERE PANDORA'S PARENTS WENT

To solve this PUZZLE, use MAP PIECE A on PAGES 10+11!



I don't know why, but they must have needed to go somewhere else!

So I should look around and see if there's some other clue that could show me which direction my parents went...

WHAT IS THE CLUE THAT PANDORA IS LOOKING FOR?

Find a hint and check your answer on PAGE 221! Then, read the NEXT PAGE to continue...



Aha! These footprints could belong to my mum or dad! They lead into the mist...



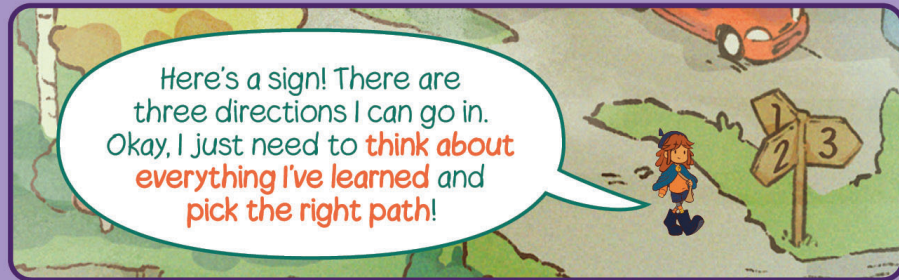
I don't want to get lost, so I should look for something to get my bearings before I go after them!

# PUZZLE

## 4

### SOLVE THE MYSTERY!

This is the last PUZZLE of MYSTERY ONE! It will reveal the conclusion to the MYSTERY. To solve it you will need MAP PIECE A and the answers to PUZZLES 1-3.



Here's a sign! There are three directions I can go in. Okay, I just need to think about everything I've learned and pick the right path!

WHICH PATH COULD PANDORA'S PARENTS HAVE TAKEN?

PATH 1

PATH 2

PATH 3

Find a hint and check your answer on PAGE 221! When you're done, congratulations! You've learnt the rules and you're ready to read PAGE 16 and continue!



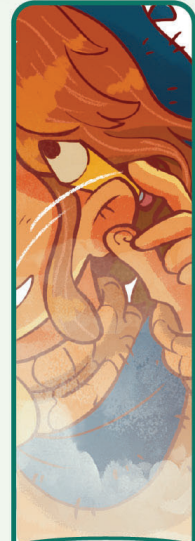
So did they make it to Puzzlevale? But why would they go in without me?



WELCOME TO PUZZLEVALE



And why is that crow staring at me? This creepy place doesn't look like a holiday town... It looks like...



...a **MYSTERY!**



And **DETECTIVE PANDORA** will figure it out!





Well done! Now you can solve each MYSTERY and uncover the story using the rules you've learned! There's a quick summary of the rules on PAGE 222 if you need a reminder!

# MYSTERY TWO

## DISCOVERING PUZZLEVALE

HELP PANDORA LOOK FOR HER PARENTS



Looks like I've got a town to explore!



Hey, look!  
There's someone  
up ahead! I should  
ask them for  
help!



Hi! Excuse  
me... I'm  
Pandora. Have  
you seen two  
strangers go  
past? My mum  
and dad!



Maybe I saw  
them, maybe I  
didn't! **Answer my  
riddle** to find out  
**which direction**  
you should look  
in...

## PUZZLE 1 FIND OUT WHICH DIRECTION PANDORA SHOULD LOOK IN



(Okay... that's a bit  
rude.) Bring it on!  
Puzzles are my  
speciality!



**Towards the star that never strays;  
the direction that a needle sways.  
The biggest field aligns with me;  
I'm the very top, you see... What am I?**

WHAT IS THE ANSWER TO THE RIDDLE?

Find a **hint** and check your **answer** on **PAGE 220!**  
Then, **read the NEXT PAGE** to continue...



Now I know  
which direction  
Mum and Dad  
were going! Perhaps there  
are more locals who  
can help...?



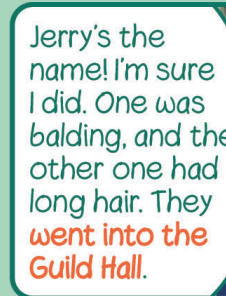
There's three  
people fishing  
up there! I should ask  
them, too!

## PUZZLE 2 FIND OUT WHICH PLACE PANDORA SHOULD LOOK IN

You may have to look back at **earlier pages** to solve this!



Hi! I'm  
Pandora!  
Have you  
seen anyone  
who could  
have been  
my parents  
pass by?



Jerry's the  
name! I'm sure  
I did. One was  
balding, and the  
other one had  
long hair. They  
**went into the  
Guild Hall.**



I'm Terry!  
How do!  
Both dressed  
in trousers,  
they were. I saw  
them going **into  
some shop or  
other.**



Name's  
Barry! They  
were dressed  
in yellow, blue  
and red! I know  
for a fact they  
**went into The  
Forge.**

WHO IS RIGHT ABOUT  
PANDORA'S PARENTS?

JERRY

TERRY

BARRY

Find a **hint** and check your **answer** on **PAGE 220!**  
Then, **read the NEXT PAGE** to continue...



Okay! I know what direction they were heading in and what kind of place they're in. I just need a bit more!



Aha! An old lady just came out of that tea shop. Maybe she could help?



That's it! I think I've asked enough questions to figure out the next step...



This is a **big** town, though, I've got to think like a real detective to solve this one...

# PUZZLE

## 3

FIND OUT WHICH AREA PANDORA SHOULD LOOK IN



To solve this PUZZLE, use MAP PIECE B on PAGES 18+19!



Hello! Can you help me? I'm looking for my parents. Have you seen anyone new in town?



Well, hello, dearie! What a sweet little child you are. Don't you know **information isn't free** round here? Find all the red gems I've lost nearby, and I'll tell you where you should look.



(She lost more than one of those!!)  
Sure!

## HOW MANY RED GEMS CAN YOU FIND HIDDEN IN MAP PIECE B?



3 GEMS. THE ANSWER IS:  
**NOWHERE**

4 GEMS. THE ANSWER IS:  
**BY SOME TREES**

5 GEMS. THE ANSWER IS:  
**BY THE FORGE**

6 GEMS. THE ANSWER IS:  
**BY A CLIFF**

7 GEMS. THE ANSWER IS:  
**NEAR A BRIDGE**

# PUZZLE

## 4

### SOLVE THE MYSTERY!



To solve the MYSTERY, you will need MAP PIECE B on PAGES 18+19 and the answers to PUZZLES 1-3.



(Okay, Pandora, you can do this!)  
I just need to put the things I've learned together to figure out where Mum and Dad went... I should **look around town carefully** and **pay close attention to signs!**

WHERE IN MAP PIECE B SHOULD PANDORA LOOK FOR HER PARENTS?



Find a **hint** and check your **answer** on PAGE 220! When you have the solution, **read** PAGES 24+25 to search for Pandora's parents there!



# MYSTERY THREE

## THE KEY COMBINATION

HELP PANDORA ENTER THE POTION SHOP



Here's the  
potion shop, but  
the door's **locked!**  
How do I get in?



Next to the door is a jumbled-up **note** and a set of **odd keys**...

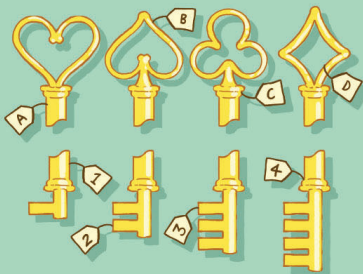
# PUZZLE

## 1

FIGURE OUT HOW TO READ THE JUMBLED-UP NOTE



I don't know what to do with the keys, so first, I need to work out **how to read** this **note**! I have a feeling it's a set of **instructions**...



IF YOU WANT TO READ THIS,  
THINK RIGHT TO LEFT...

YEK THGIR EHT ES00HC OT  
.REHTEGOT SEVLAH DWT TUP  
EKATSIM A EKAM UDY FI TUB  
!REVERDF KCOL LLIW POHS EHT

ELAVELZZUP FO ELP0EP EHT  
GNOLA UDY PLEH LLIW  
THGIR ERA STRAP HCIHW HTIW  
IGNORW ERA STRAP HCIHW DNA

WHAT DOES THE NOTE SAY?



Find a **hint** and check your **answer** on **PAGE 219!** Then, **read the NEXT PAGE** to continue...



Hmm, maybe the old lady knows more about these **keys**...



Hey... erm, I'm sorry, what was your name? I never asked! I'm Pandora.



Oh, not to worry, dearie! I'm **Granny Garnett**, or at least that's what everyone here calls me... I can't **quite** remember my real name! Thank you for finding all my gems earlier.

# PUZZLE

## 2

FIND OUT ABOUT THE KEYS



To solve this **PUZZLE**, use **MAP PIECE C** on **PAGES 24+25!**



You're welcome! Do you know anything about these **keys**?

I used to know how many little sticky-out bits there were on the part that goes into the lock. I remembered because the **clock on the Guild Hall** is broken. The **time it's stuck on** is the **right number!**



WHAT NUMBER IS GRANNY GARNETT TALKING ABOUT?



Find a **hint** and check your **answer** on **PAGE 219!** Then, **read the NEXT PAGE** to continue...





You'll have to find Rita Idyll for your next clue, dearie.



Okay, thanks, Granny!



Ah, maybe that's Rita?



Hi! Are you Rita Idyll? Granny said you might know something about the **potion shop keys**?



Oh, you're back. If you must know, yes, I am Rita Idyll. I do know something about the **keys**. You'll have to solve this **riddle** to find out what **shape the handle of the key is...**



May my riddles help you on your way, Pandora. Now, go.



Looking forward to the next one, Rita!



Okay! I must be able to enter this **mysterious potion shop** now!



Thanks to Granny Garnett and Rita Idyll, I should be able to work out **which key unlocks the shop!**

## PUZZLE 3 FIND OUT MORE ABOUT THE KEYS

To solve this PUZZLE, use MAP PIECE C on PAGES 24+25!



You should know, I LOVE puzzles!



Starting from me, to the north west you hop. Then follow the road to the potion shop. Your path makes a line that's half of my clue, but the true shape appears if you mirror it, too.

WHAT SHAPE DOES THE RIDDLE REVEAL?

Find a hint and check your answer on PAGE 219! Then, read the NEXT PAGE to continue...

## PUZZLE 4 SOLVE THE MYSTERY!

To solve the MYSTERY, you will need the answers to PUZZLES 1-3.

USING WHAT YOU'VE DISCOVERED, FIGURE OUT WHICH PARTS MAKE THE RIGHT KEY!



HANDLE:

END:

Find a hint and check your answer on PAGE 219! When you have the solution, read PAGE 30 to open the door to the potion shop!

# MYSTERY FOUR

## A FOUL FORTUNE

FIND OUT MORE ABOUT PANDORA'S PARENTS





I wonder if anyone's inside this strange place?



Um... Hello? Is anyone there? I-I'm Pandora.

I was told that my parents came here...

## PUZZLE 1 TALK TO THE SHOP-KEEPER



Ahh... Pandora. I've been expecting you. The answers you seek will be revealed in my cards. Hmm, interesting...

The River, The Crow and The Potion. Each card points to a word and the words together, will let you know when you will see your parents again. Let's start with The River...



For **The River**, the word is **hidden on the card itself**. No river is the same each time you look at it. Look carefully at the flowing water. What do you see, Pandora?

WHAT WORD IS HIDDEN IN "THE RIVER"?



Find a **hint** and check your **answer** on **PAGE 218!** Then, **read the NEXT PAGE** to continue...



The second card, **The Crow**, relates to **something you own!** Does that make you think of anything, Pandora?



**OH!** Maybe it's my **Detective Crow** comic! The comic has seemed **strange** ever since I came to Puzzlevale, like it's talking to me. I could try opening it...

## PUZZLE 2 FIND THE SECOND WORD



GOOD THINKIN', PANDORA! I'M PROUD OF YA, KID. NOW, JUST SOLVE THIS PUZZLE AND YOU'LL FIND THE SECOND WORD...

1. THE PLACE WHERE THEY LOCK UP CRIMINALS!
2. WHEN THE STORE'S NOT OPEN, IT'S \_\_\_\_\_!
3. YOU CAN WRITE WITH ONE OF THESE, OR KEEP A PIG IN ONE!
4. WHEN THERE'S NONE LEFT, THEY'RE ALL \_\_\_\_\_!



**SOLUTION TIME!**

1. 

--	--	--	--	--
2. 

--	--	--	--	--	--	--
3. 

--	--	--	--	--
4. 

--	--	--	--	--

ONCE YOU'VE SOLVED EACH CLUE AND LINED UP ALL THE LETTERS, THE WORD YOU'RE AFTER SHOULD BE IN THE YELLOW SQUARES!



Find a **hint** and check your **answer** on **PAGE 218!** Then, **read the NEXT PAGE** to continue...



Wow...  
um... thank you,  
Detective Crow!  
Can you even  
hear me? I feel  
silly talking to  
a book!



So,  
what about  
the **third**  
word,  
then?



Huh. That gives me a  
**symbol**, but what **word** does  
that mean? There are a few words  
I can think of... Maybe it'll be more  
obvious if I think about all three  
words together...



## PUZZLE 3 FIND THE THIRD WORD



The third card,  
**The Potion**, relates  
to **something in**  
**my shop!** Which one  
of these potions  
matches the  
one on the card?



WHICH SYMBOL IS ON THE CORRECT BOTTLE?

Find a **hint** and check your **answer** on **PAGE 218!**  
Then, **read the NEXT PAGE** to continue...



## PUZZLE 4 SOLVE THE MYSTERY!

To solve the **MYSTERY**, you will  
need **the answers** to **PUZZLES 1-3.**



USING WHAT YOU'VE DISCOVERED, FIGURE OUT HOW LONG  
IT WILL BE UNTIL PANDORA SEES HER PARENTS AGAIN...

IT WILL BE A

Find a **hint** and check your **answer** on **PAGE 218!**  
When you have the solution, **continue reading** the  
panels below to find out what happens next...



What?! No!  
That can't be  
right! This all feels  
like a strange  
dream. I've got to  
find a way out of  
here. My parents  
are probably just  
**waiting for me**  
**back at the car...**  
right?



I'VE GOTTA GO!



# MYSTERY FIVE

## THE CLOSED CLIFF

DISCOVER THE DARK TRUTH ABOUT PUZZLEVALE

Huh? What's going on?! It's getting dark and the town looks like it has **changed!**





## PUZZLE 2 COUNT THE SIGNS ALONG PANDORA'S ROUTE

## PUZZLE 1 GET BACK TO THE PETROL STATION

To solve this **PUZZLE**, use **MAP PIECE E** on **PAGES 36+37!**



FIND A CLEAR ROUTE TO THE PETROL STATION, WHICH IS MARKED WITH THIS SYMBOL:



Find a **hint** and check your **answer** on **PAGE 217!** Then, **read the NEXT PAGE** to continue...

To solve this **PUZZLE**, use **MAP PIECE E** on **PAGES 36+37!**



HOW MANY SIGNS WILL PANDORA PASS ON HER ROUTE TO THE PETROL STATION, AND WHAT WORDS ARE ON THEM?

Find a **hint** and check your **answer** on **PAGE 217!** Then, **read the NEXT PAGE** to continue...



## PUZZLE 3 EXPLORE THE PETROL STATION

I'd better keep track of **everything** that has changed...

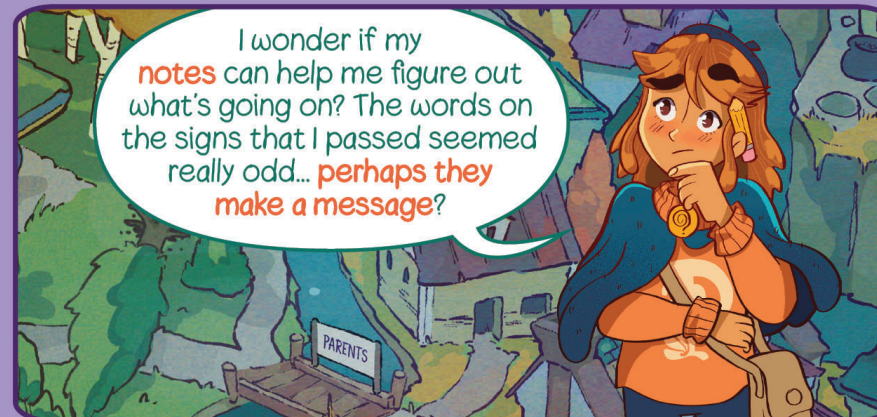


SPOT THE DIFFERENCES SINCE THE LAST TIME PANDORA WAS AT THE PETROL STATION

Find a **hint** and check your **answer** on **PAGE 217!** Then, **read the NEXT PAGE** to continue...

## PUZZLE 4 SOLVE THE MYSTERY!

To solve the **MYSTERY**, you will need your **answer** to **PUZZLE 2**.



ARRANGE THE WORDS ON THE SIGNS THAT PANDORA PASSED INTO A SENTENCE, REVEALING ONE OF PUZZLEVALE'S SECRETS!

Find a **hint** and check your **answer** on **PAGE 217!** When you have the solution, **read PAGE 42** to complete **CHAPTER 1!**



Well done for getting this far! You've completed **CHAPTER 1** and discovered the dark secret of the strange town that Pandora has stumbled into:  
**THERE IS NO WAY OUT OF PUZZLEVALE.**

## CHAPTER 1 PUZZLE



You're becoming a **master detective** just like Pandora! Put your powers of observation to the test, and **answer these questions**. You can flick through **CHAPTER 1** to help you.



1. WHERE DID PANDORA'S MUM FIND OUT ABOUT PUZZLEVALE?

2. WHO HAS PANDORA MET IN TOWN SO FAR?

3. WHAT DID THE FORTUNE TELLER TELL PANDORA ABOUT FINDING HER PARENTS?



Find **hints** and check your **answers** on **PAGE 216!** When you have the solutions, **read THE NEXT PAGE** to continue...



## CHAPTER 2

# THE CURIOUS CROW