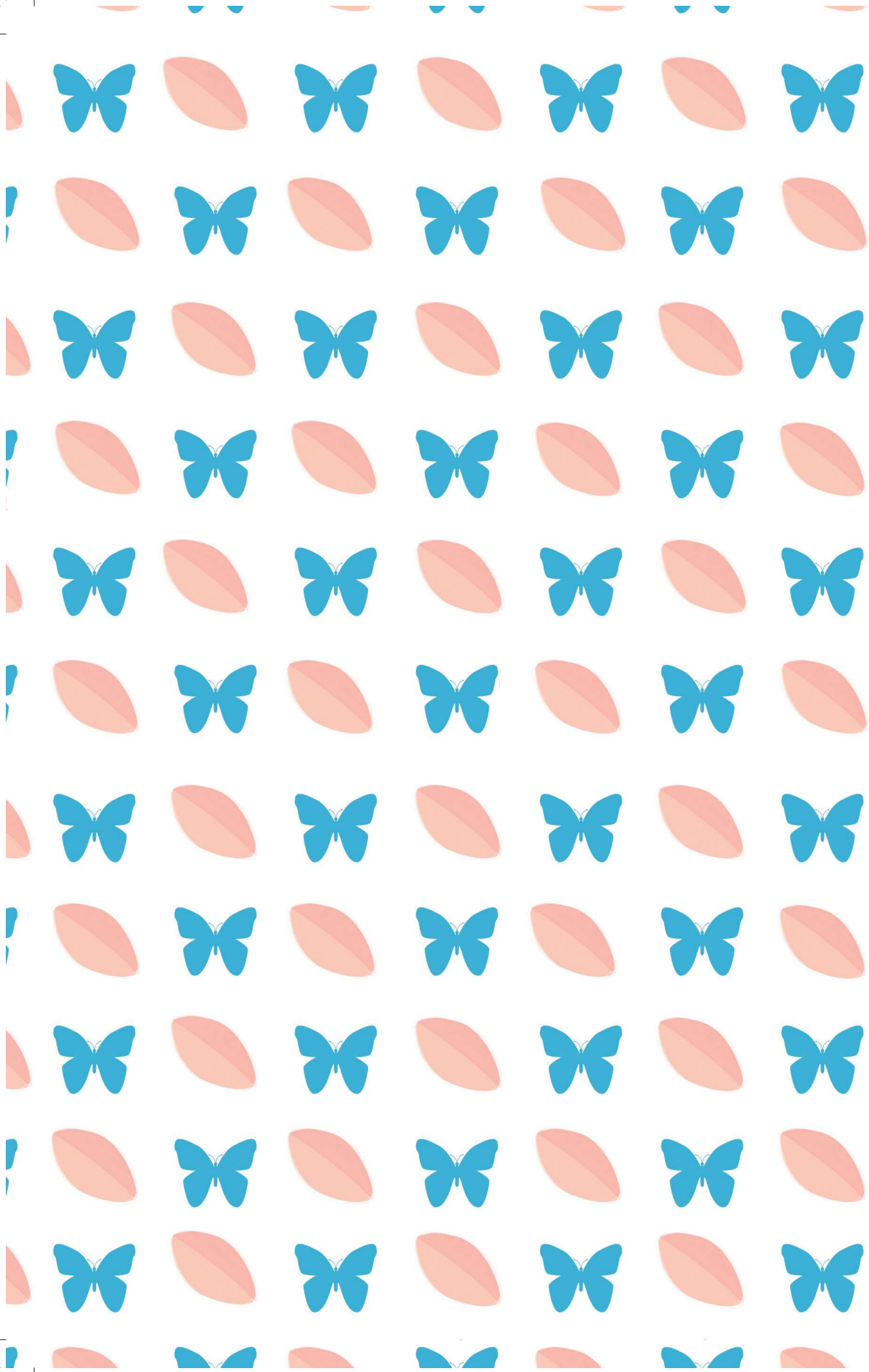




Brielle
AND
BEAR
PROJECT FAIRYTALE



Brielle & BEAR

Project Fairytale

Salomey Doku



h
HARPER FIRE

For those who inspire us not to give up. Thank you.

Books by Salomey Doku

BRIELLE & BEAR: ONCE UPON A TIME

BRIELLE & BEAR: PROJECT FAIRYTALE

First published in the United Kingdom by Harper Fire,
an imprint of HarperCollins *Children's Books*, in 2026
HarperCollins *Children's Books* is a division of HarperCollinsPublishers Ltd
1 London Bridge Street
London SE1 9GF

www.harpercollins.co.uk

HarperCollinsPublishers
Macken House, 39/40 Mayor Street Upper
Dublin 1, D01 C9W8, Ireland

1

Text copyright © Salomey Doku 2026
Cover and interior illustrations copyright © Salomey Doku 2026
Cover design copyright © HarperCollinsPublishers Ltd 2026
All rights reserved

ISBN 978-0-00-861760-8

Salomey Doku asserts the moral right to be identified as the author and illustrator of the work.

This is a work of fiction. Names, characters, businesses, places, events, locales and incidents are either the products of the author's imagination or used in a fictitious way. Any resemblance to actual persons, living or dead, or actual events is purely coincidental.

A CIP catalogue record for this title is available from the British Library.

Printed and bound in Malaysia

Conditions of Sale

This book is sold subject to the condition that it shall not, by way of trade or otherwise, be lent, re-sold, hired out or otherwise circulated without the publisher's prior consent in any form, binding or cover other than that in which it is published and without a similar condition including this condition being imposed on the subsequent purchaser. No part of this publication may be reproduced, stored in a retrieval system or transmitted in any form or by any means, electronic, mechanical, photocopying, recording or otherwise, without the prior permission of HarperCollinsPublishers Ltd.

Without limiting the exclusive rights of any author, contributor or the publisher of this publication, any unauthorised use of this publication to train generative artificial intelligence (AI) technologies is expressly prohibited. HarperCollins also exercise their rights under Article 4(3) of the Digital Single Market Directive 2019/790 and expressly reserve this publication from the text and data mining exception.



This book contains FSC™ certified paper and other controlled sources to ensure responsible forest management.

For more information visit: www.harpercollins.co.uk/green

**LAST TERM,
AT ONCE UPON A TIME UNIVERSITY...**

After a chance meeting at
the campus bookshop...



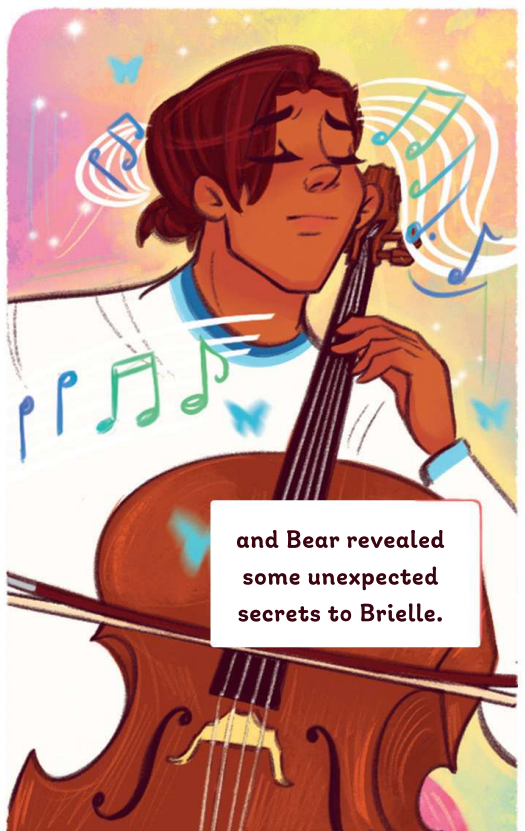
...book-lover Brielle and Princes rugby
player Bear seemed to be set for a
fairytale romance of their own.



Despite facing a
few early challenges
along the way,



they began to
grow closer,



and Bear revealed
some unexpected
secrets to Brielle.

However, navigating relationships is never easy,

and not everyone was glad to have Brielle back in Rosebridge.



Unknown to Brielle, her return caused some strained relationships to crumble.



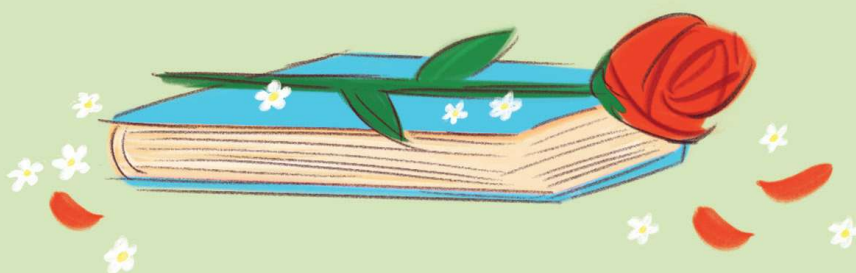
And as Winter term turns to Spring,

the butterfly effect may lead to bigger challenges for Brielle and Bear and their blossoming romance...

1 Spring



CHAPTER 1



Monday,
7 March
3:06 p.m.

Welcome to
Once Upon a Time...

...the university where
dreams come true.

F
♥ FAIRYTALE RULE NO. 1
• All the best fairytales start with
'Once upon a time...' ♥

⊙ FAIRYTALE RULE NO. 2
• Ordinary people fall into adventures all the
time - especially when they least expect it.

★ FAIRYTALE RULE NO. 3
• The protagonist is always optimistic and
courageous. Even when faced with 'complications'.

☹ FAIRYTALE RULE NO. 4
• A good fairytale isn't complete
without... a 'good' villain. ☹

♥ FAIRYTALE RULE NO. 5 ♥
• Obstacles are overcome by hard
work, courage, friendship and love.
And sometimes magic.

★ FAIRYTALE RULE NO. 6 ★
• Generosity will always be rewarded!!

† FAIRYTALE RULE NO. 7
• When things are going well,
watch out - they're bound to go
wrong sooner rather than later...

♥ FAIRYTALE RULE NO. 8
• Always expect the
unexpected!!!

FAIRYTALE RULE NO. 9
• Kindness, light and truth will
always find a way to prevail.

★ FAIRYTALE RULE NO. 10 🎵 ★
• There is always a musical interlude. 🎵

★ FAIRYTALE RULE NO. 11 = ★
• Enchantment always finds a way.

FAIRYTALE RULE NO. 12 ♥
• Anything can happen in a fairytale...
♥ ♥

Except, THIS wasn't a part of the dream!

The Magic Mirror of Expectation vs. Reality



fairytale Rule No. 13
The protagonist usually makes it through a challenge with not a hair out of place.



PRRING!!

Hi, Lena...

What?!
Nooo!! History Society have double booked our spot... again?

But we need that space for the book festival on Saturday!

This is getting ridiculous.



Maybe we can still get the Old Observatory?

Brielle!

Sorry, Lena. Can I call you back in five minutes?



sheepish

Ms Gwen
Head bookseller

So, I need some help. Do you think you could cover another two shifts for me this week?



Two more?
But, Ms Gwen!

Pleeeeeease?

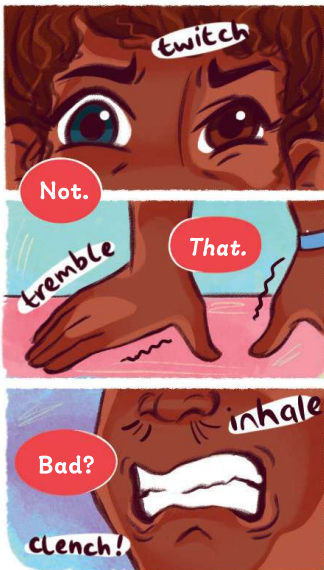
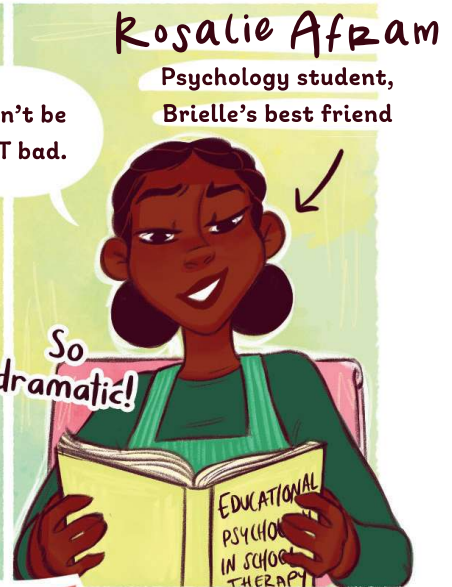
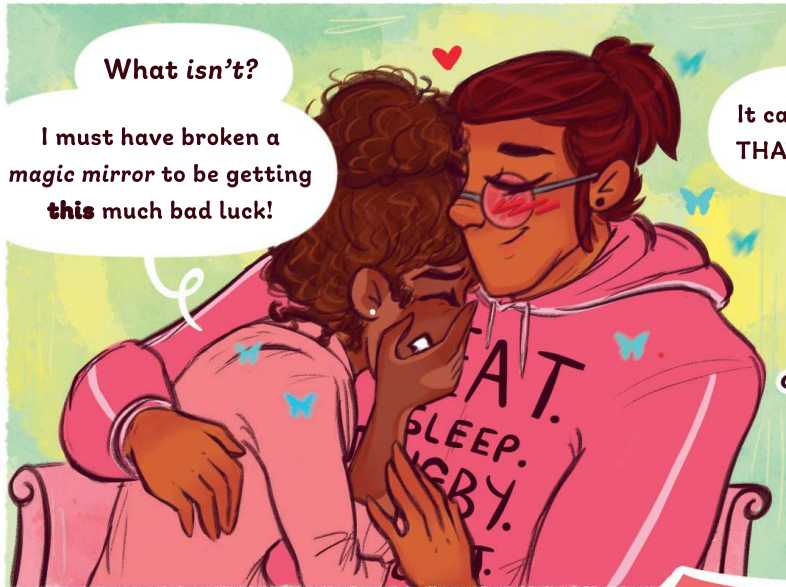
The new guy just quit and we're short-staffed. I wouldn't ask, but you're my most reliable worker.



I'll pay you double?

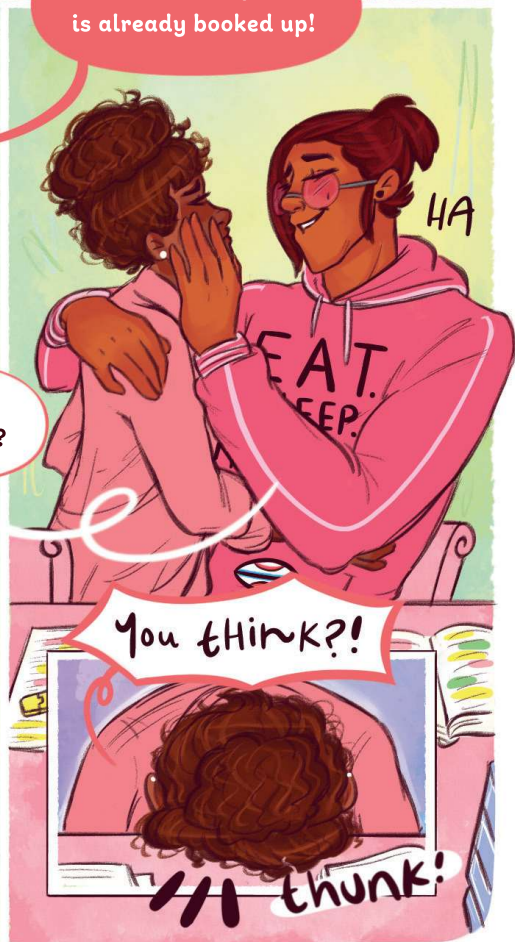




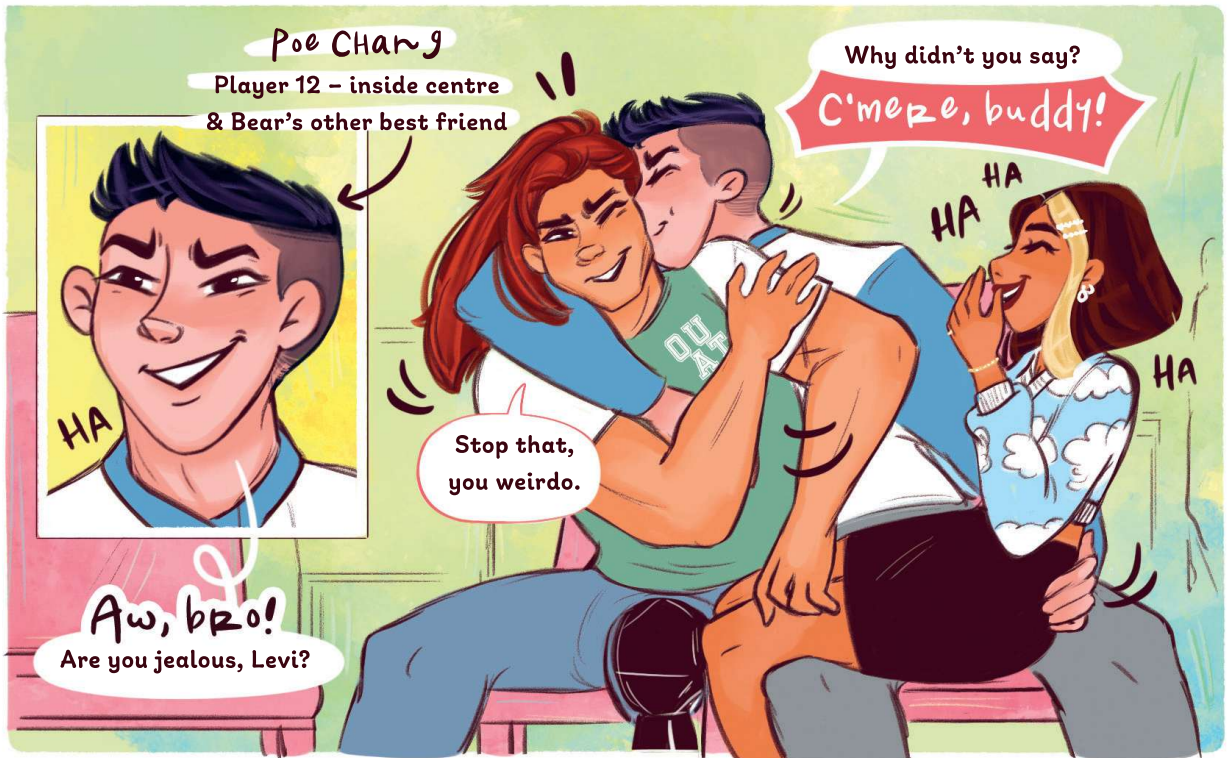
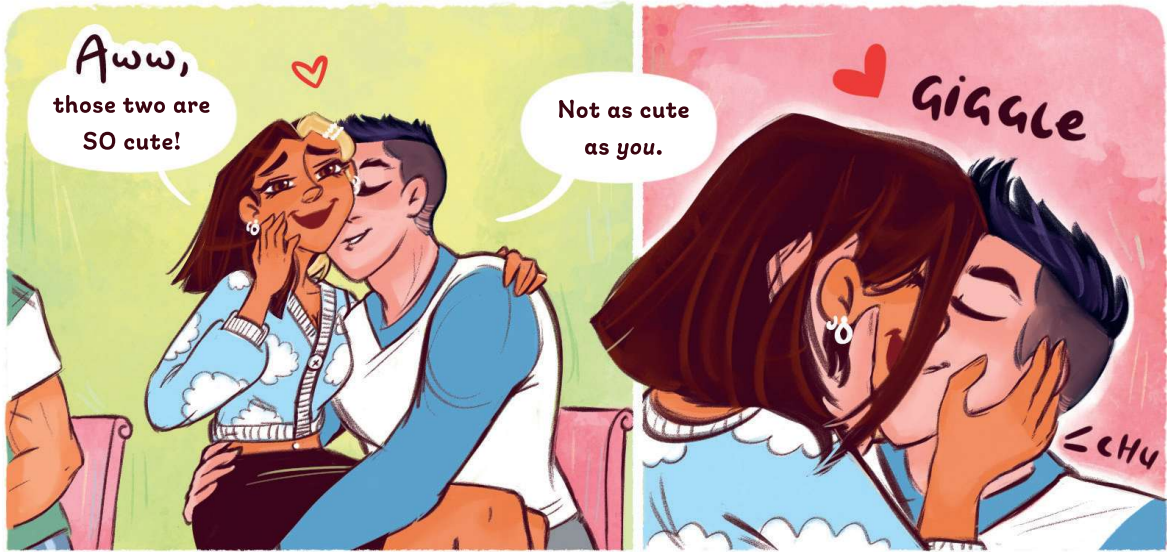


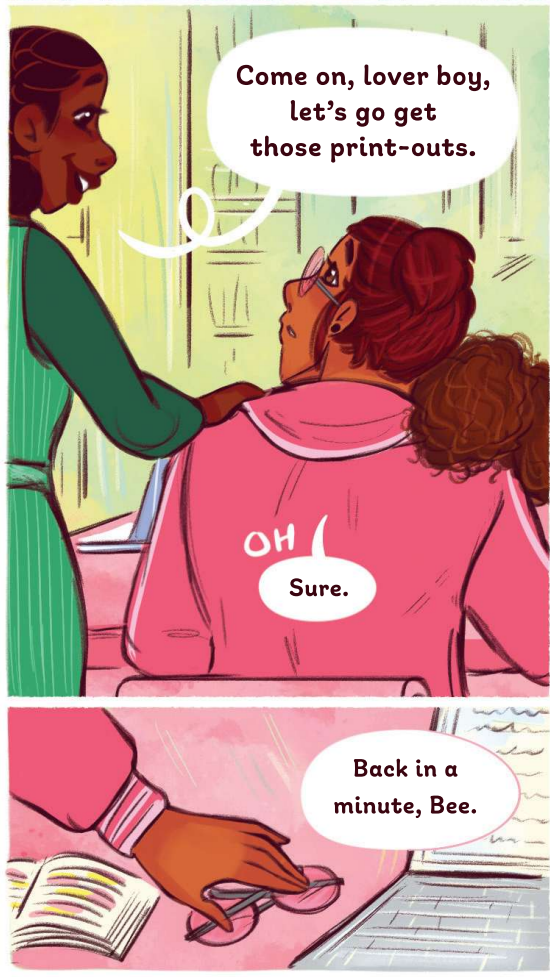


7













What do you think about Malachi and Lewis, then? You can see it, can't you?

Everyone can see it, Sasha.

Except for those two!
tch!

And Jezia.

Honestly! They're all hopeless.

nah,
Jez can see it.

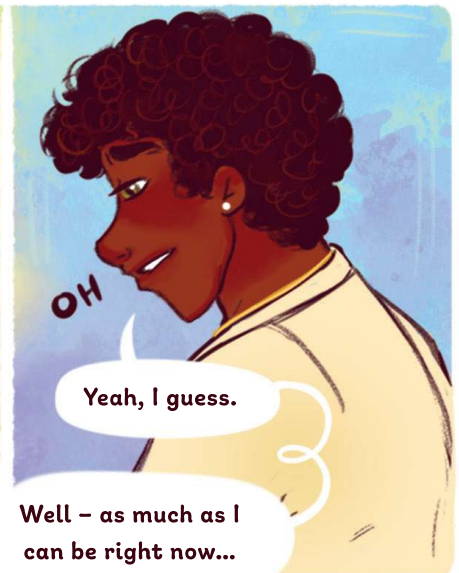
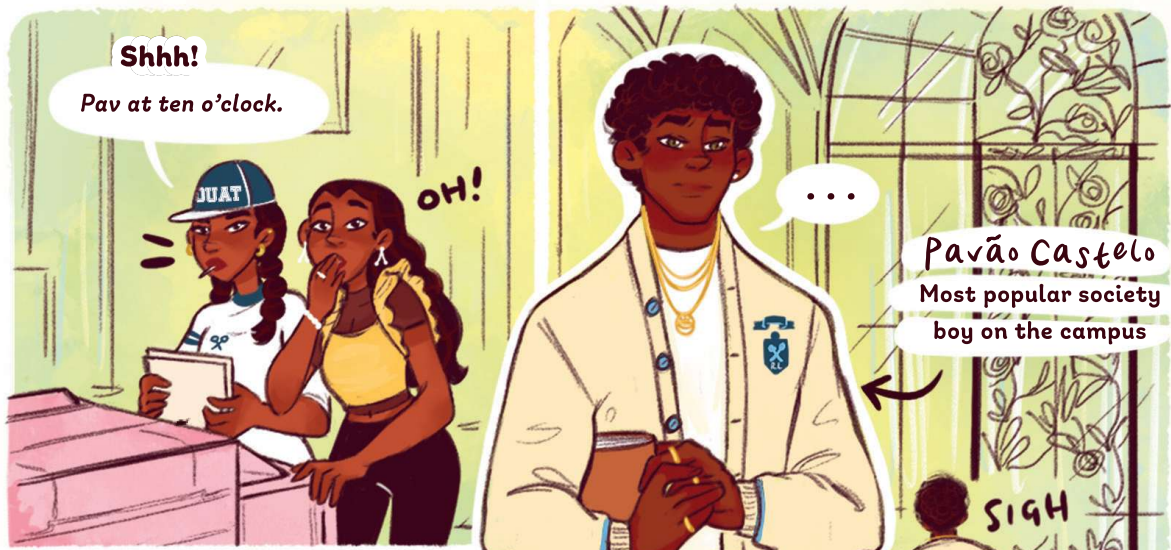
Ricketta Baptista
Triplet, sister to Sasha and Jezia Baptista

GASP!
Stop it! Since when?

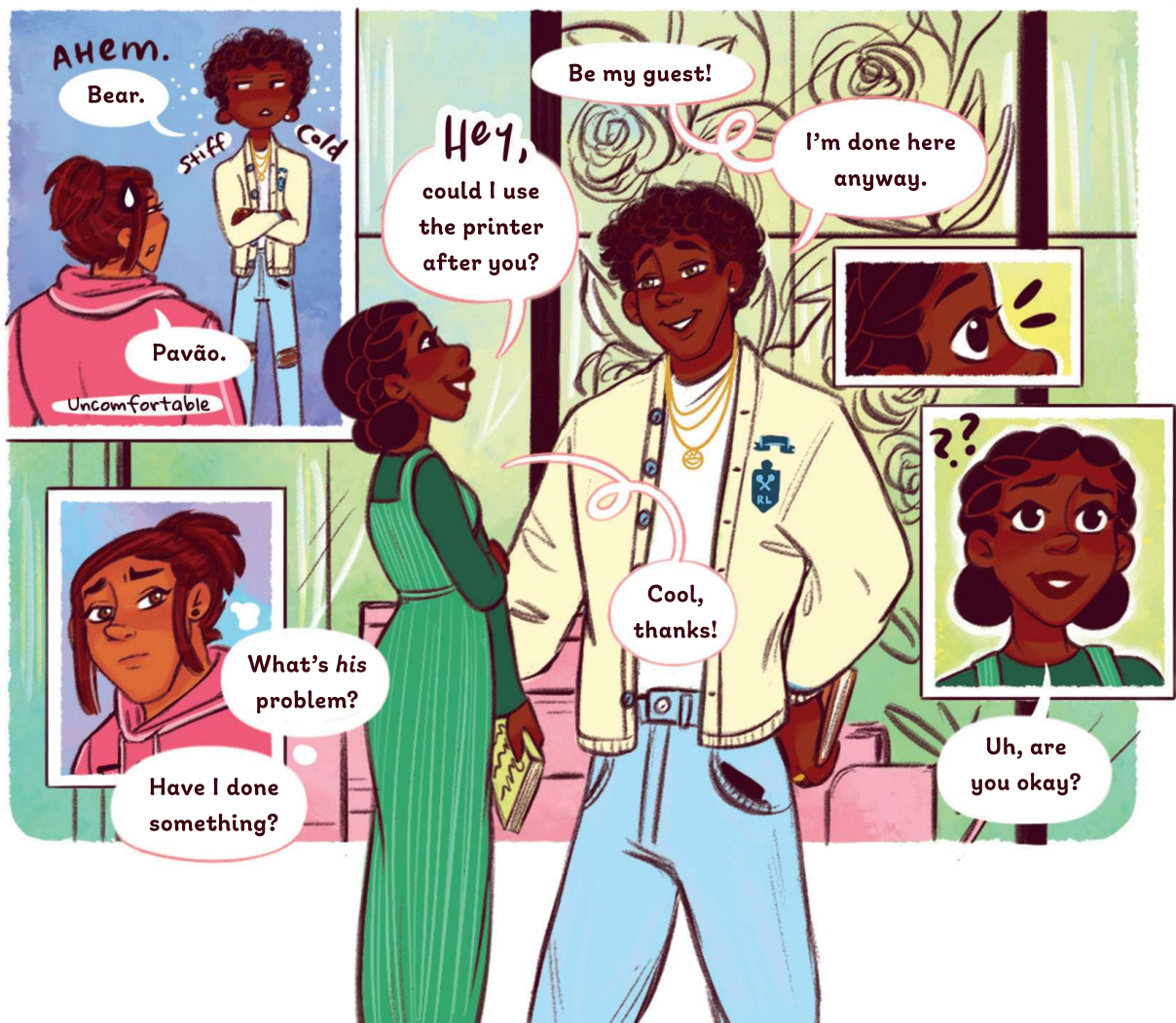
She's just pretending she can't because Malachi has a thing for her.

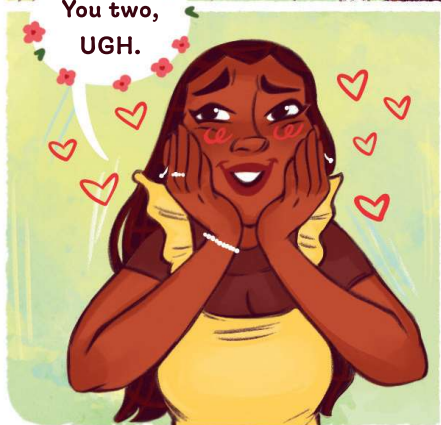
Sasha Baptista

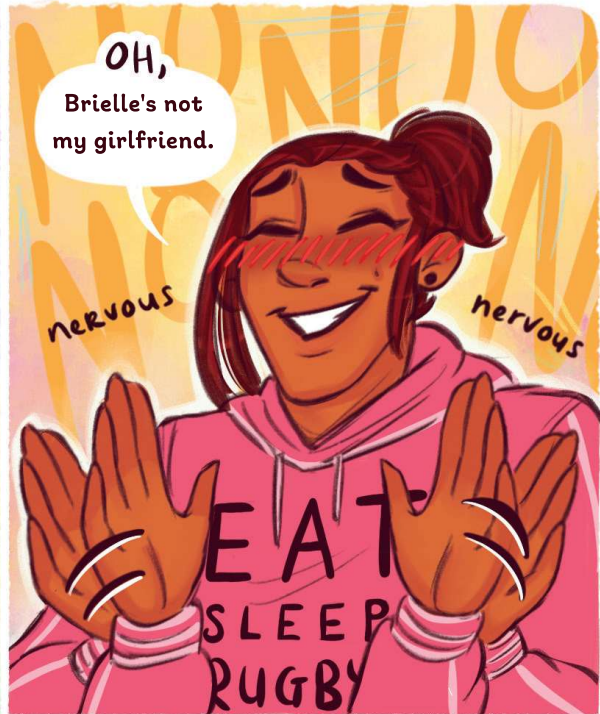
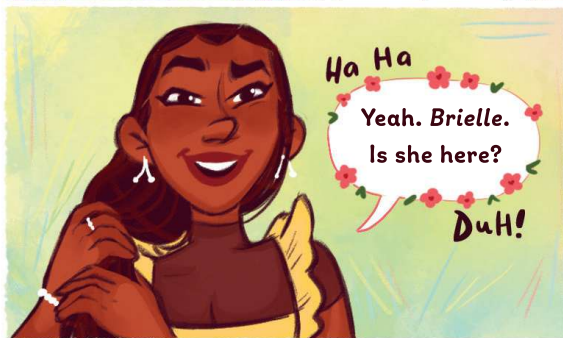












??
glance

OH,
Brielle's not
my girlfriend.

nervous nervous

Ha Ha
Yeah. Brielle.
Is she here?
DuH!

EAT
SLEEP
RUGBY

Seriously?
ANOTHER couple that
doesn't even know they're
a couple!



And I thought
Malachi and Lewis
were hopeless!

Honestly, Rick,
what is wrong with
these guys?

Are all rugby
players like this?

What, shy?
Pfft.



Oh, shoot,
yeah.
They're
obsessed!

HA
HA

You're forgetting
about, like, Poe Chang
and Maya Reno.

Must just be
you and Lewis,
then, Bear.



But Lewis is just, like, surprisingly pure.

For a meathead.

Lewis?

What's he got to do with this-?

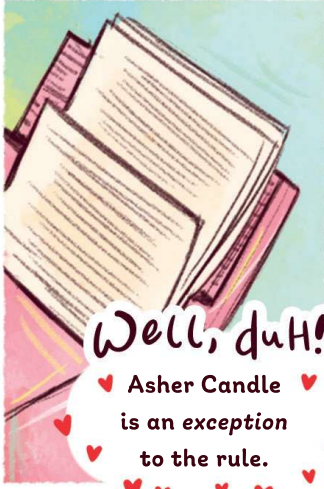
And loyal.

And thoughtful.

He's literally made of perfect boyfriend material!

*- Perfect Boyfriend Material

Hey, I thought Asher was PBM,* Sasha?



Well, duh!

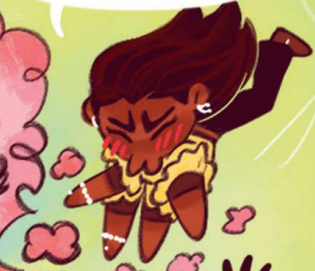
♥ Asher Candle ♥
is an exception to the rule.
♥ ♥ ♥ ♥ ♥ ♥ ♥ ♥ ♥ ♥



Yeah, but he is your boyfriend.

Rick!
Shhh!

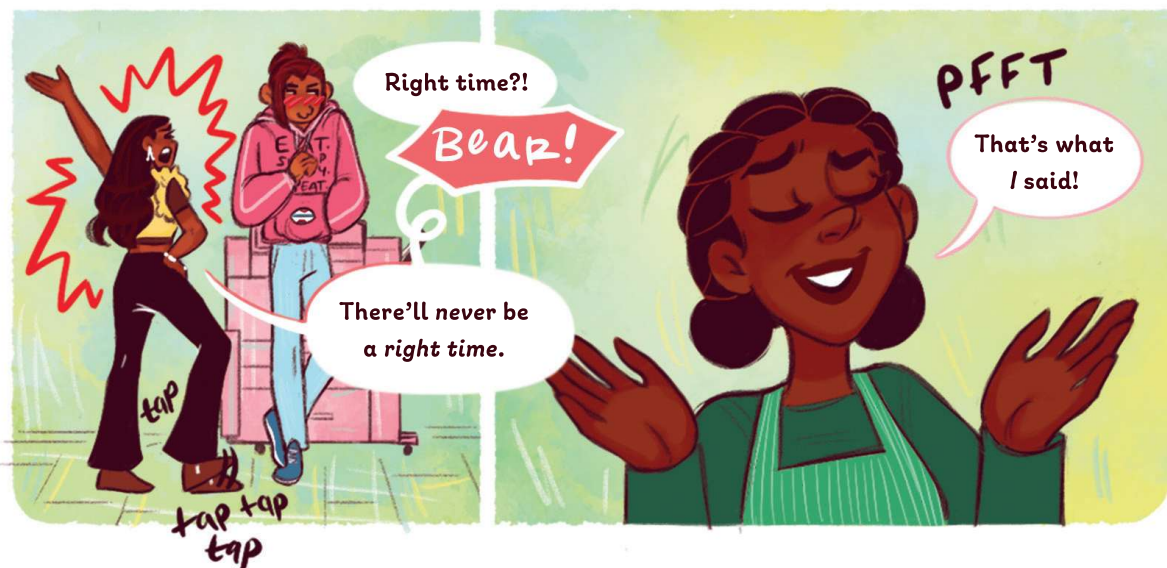
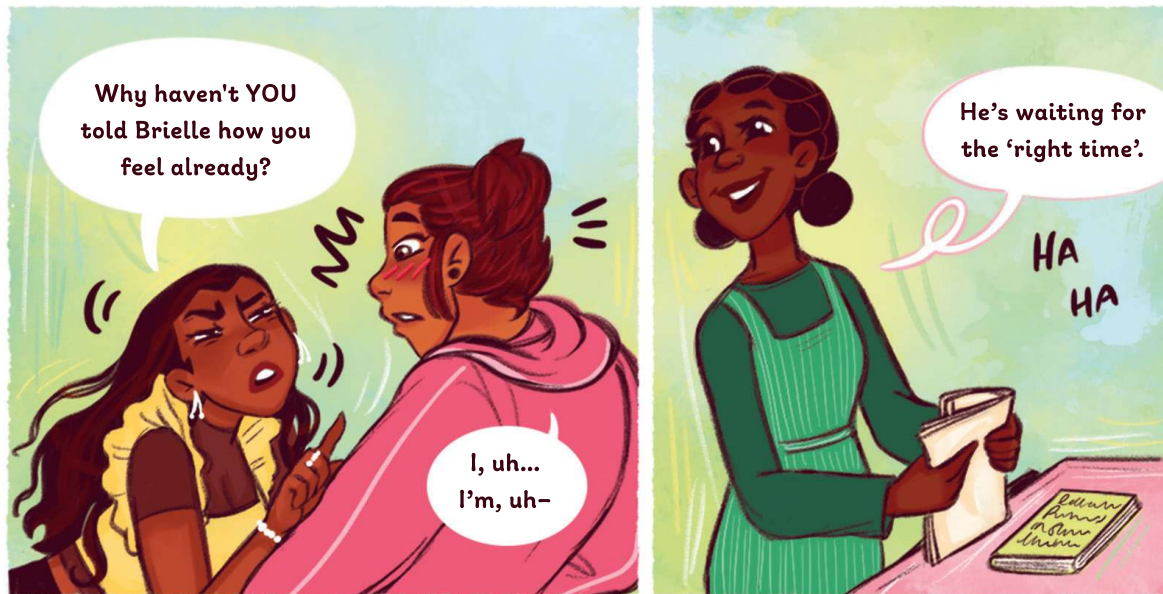
You didn't hear any of that, Bear.



Er, Asher Candle? As in, the Villainous Edge fullback Asher? As in my best friend Levi's brother, Asher? That Asher?



Now you know why she rejected you last year...





So, you're basically in couple mode but... you're not a couple?

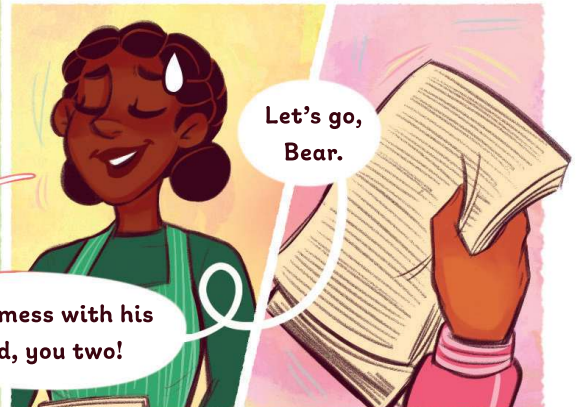
Hmm..

shake



Oooh, that's dangerous territory. Especially if you **really** like her.

W-why?



Let's go, Bear.

Don't mess with his head, you two!



Because someone else could swoop in, that's why!

HA HA PFFT HA HA

rar!

EAT. SLEEP. RUGBY. REPEAT.

Bear, don't worry. No one's gonna swoop in.



It's not that I don't want to! She's just...

ARGH,

there hasn't been a good time for us. I just wish I could figure out how...



OH!



*- Seize the day

